

# I-105: Willamette River – Pacific Highway 2023 Paving Project Review

*Working together to Pave the Impossible.*





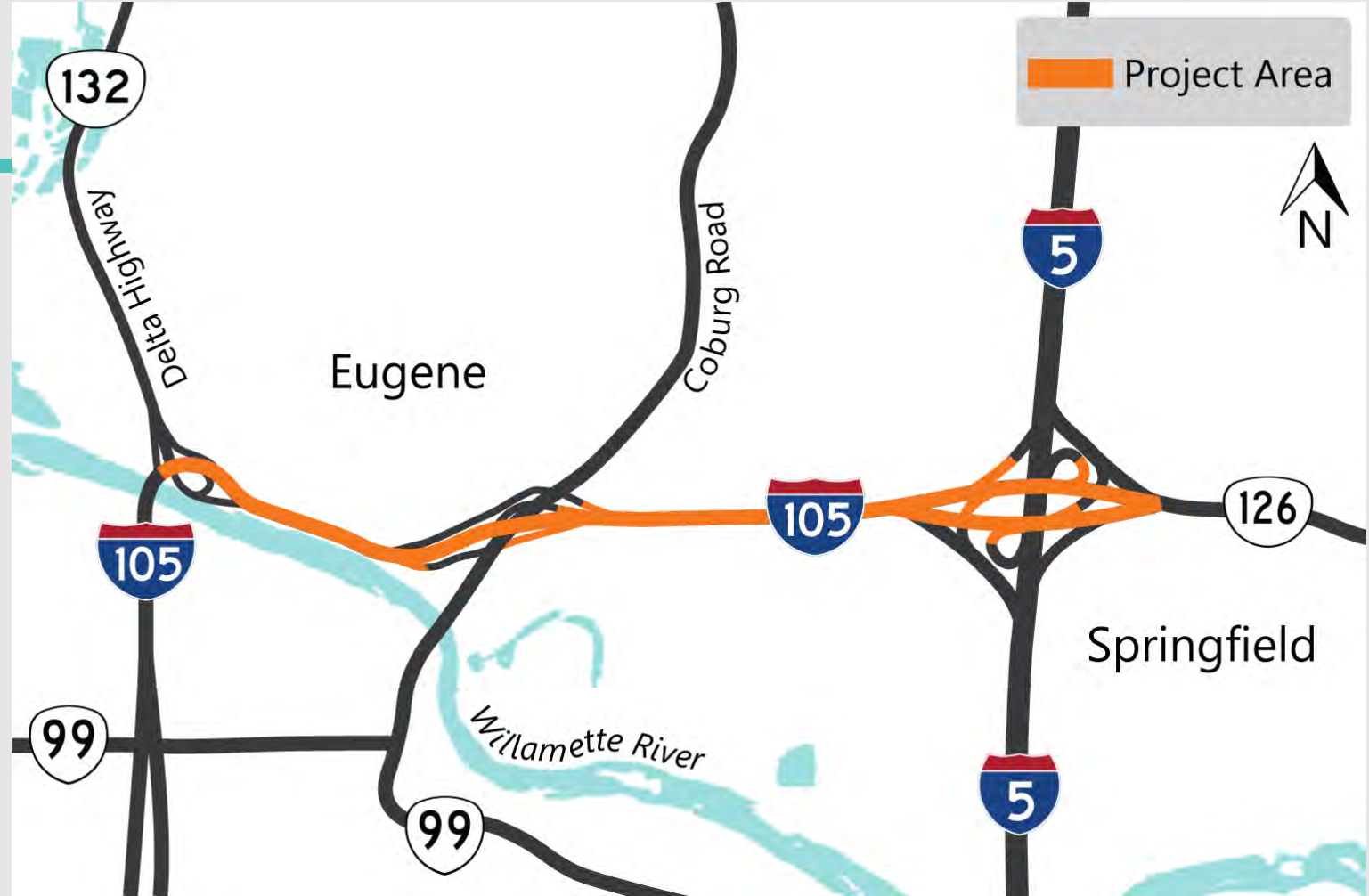
# AGENDA

---

- 1) **Location** – Where was the project?
- 2) **Scope** – What did the work include?
- 3) **Work Zone Setup** – What options were available for completing the work?
- 4) **Prep Work** – What planning was required?
- 5) **Construction** – What did it look like?
- 6) **Results** – How did it turn out?

# LOCATION

- Project Length (3.1 Miles)
- Fixed median barrier
- 2-3 lanes in each direction
- Posted Speed: 55 MPH
- Classified as Urban Interstate
- AADT = 50,000 – 70,000



# SCOPE

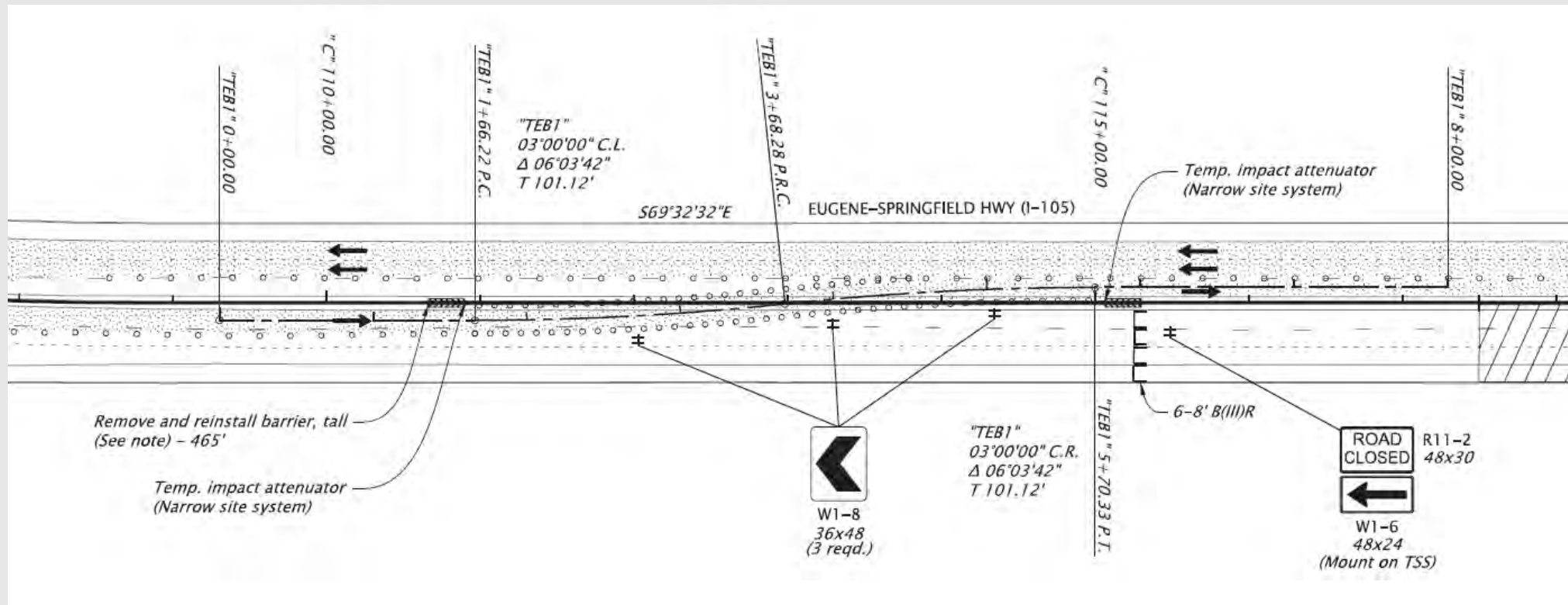
- Pavement Preservation Project
- Single-Lift (2.5") Grind & Pave Travel Lanes (Extend 3' Beyond Fog Lines)
- Includes 11 On/Off Ramps
- **Approximately 25,000 Tons of ACP estimated**
- Limited Multi-Lift 5.5" Pavement Repairs (Locations TBD)
- Fog Coat Shoulders
- Thin Lift Bridge Deck Overlays (Multiple Structures)
- Replace Guardrail Terminals
- Reinstall ATR Loop Detection
- Replace Existing Striping





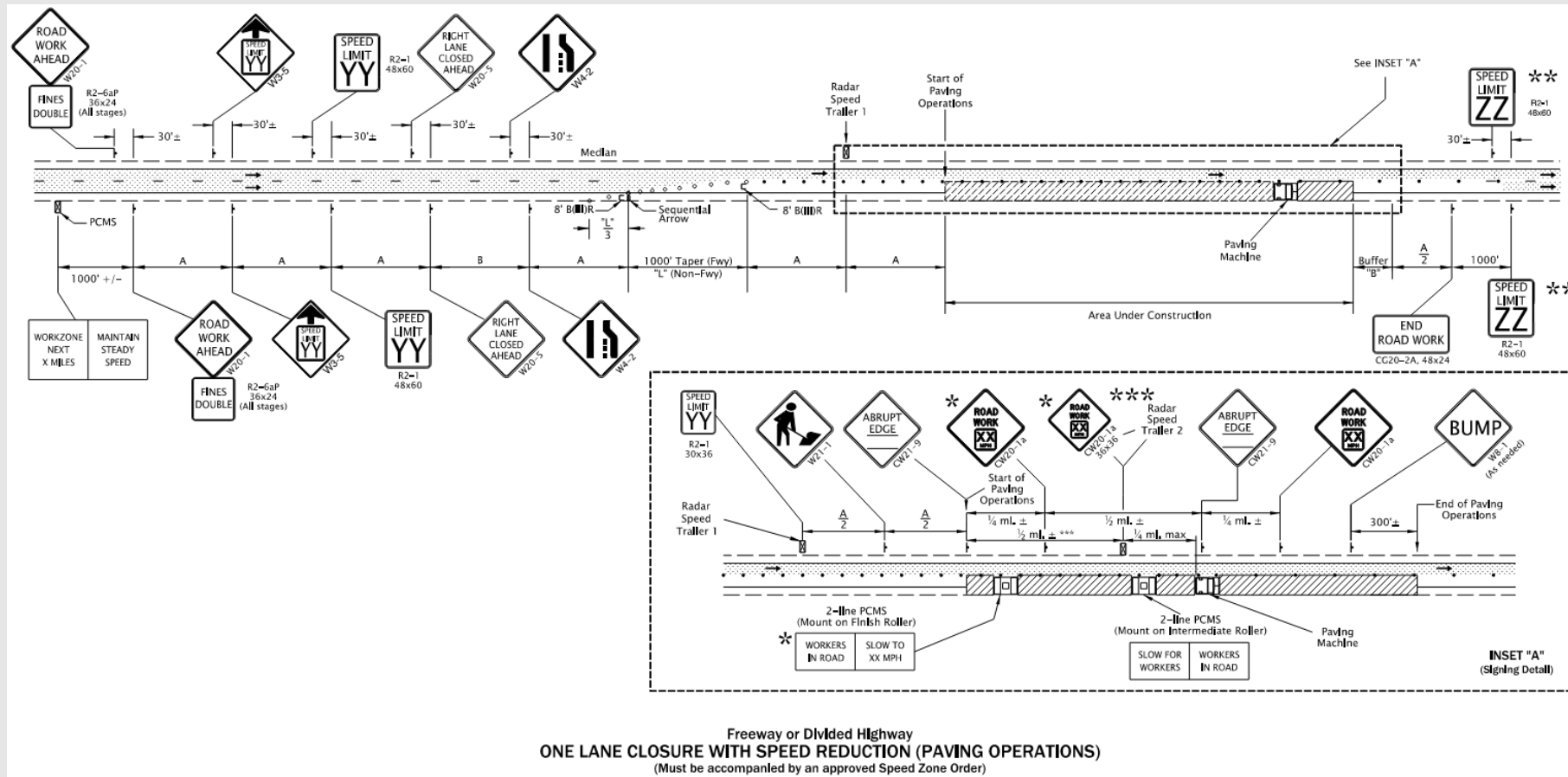
# WORK ZONE SETUP – WEEKEND CROSSOVERS

- 2 Limited Duration Events Allowed
- Allowed Lane Times: 8 PM Fri. – 5 AM Mon.



# WORK ZONE SETUP – STANDARD LANE CLOSURES

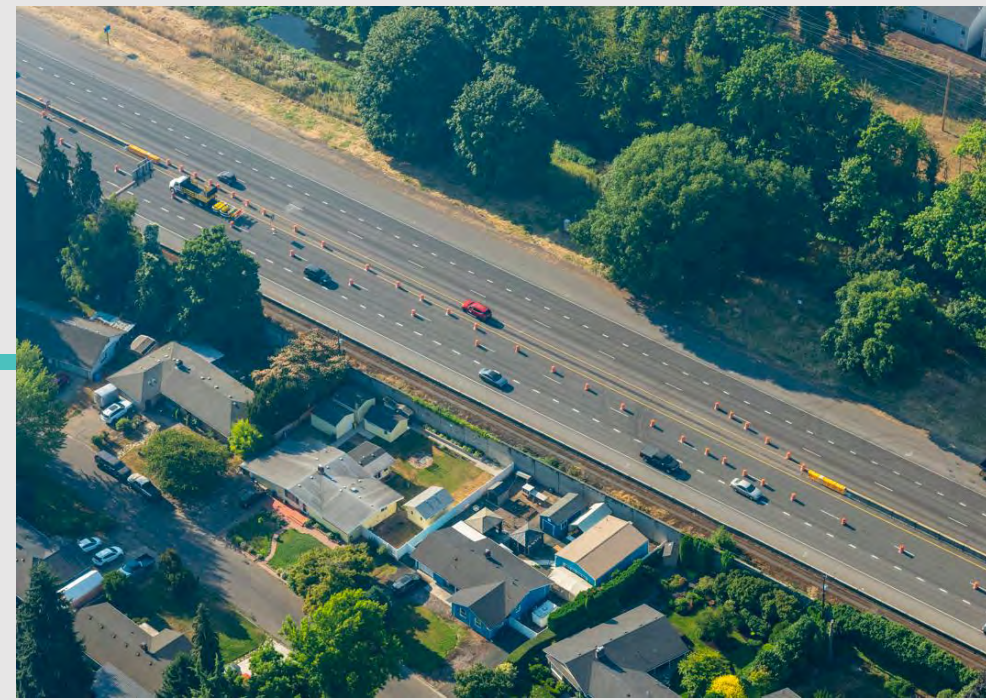
- Allowed Lane Times: 8 PM – 5 AM, Sun. – Thurs.



# PREP WORK

## How to be successful with Crossovers?

- **Timing**
  - Weekend Only: Friday night – Monday morning
  - Avoid weekends that conflict with local events
- **Public Outreach**
  - Radio Ads
  - Sandwich Boards
  - Construction Alerts
- **ODOT Resources**
  - Incident Response (IR)
  - Variable Message Signs (VMS)

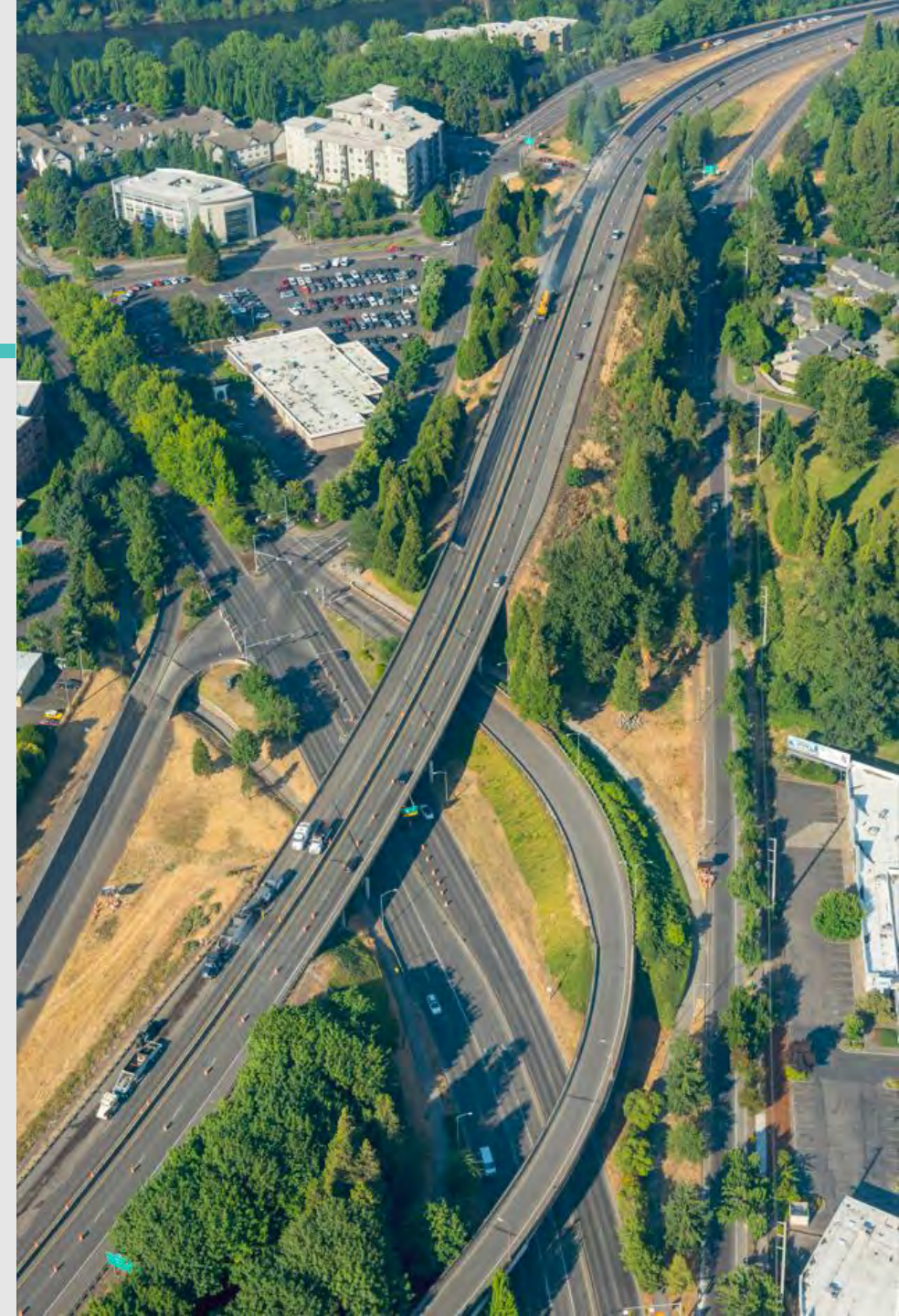




# PREP WORK

## How to be successful with Crossovers?

- Communication & Planning!!!
  - Multiple meetings
  - Determined when the crossovers would happen
  - Worked together to figure out plan
    - Detailed Map for each shift (expected work area)
    - Created hour by hour schedule
      - What work is going on?
      - Where is it happening?
  - Plan out the work as much as possible in advance







**CONSTRUCTION**





















SP-107  
10/11  
→

SP-107  
10/11  
→







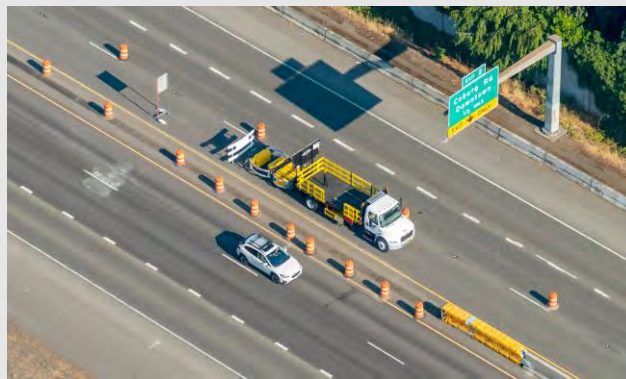




# CONSTRUCTION

## Weekend Crossover Benefits

- **SAFETY (INCREASED!)**
  - Workers protected from live traffic
  - More room to work (*reduced conflict points*)
  - Fewer setups and removals of Traffic Control devices (*reduced worker exposure to live traffic during critical events*)

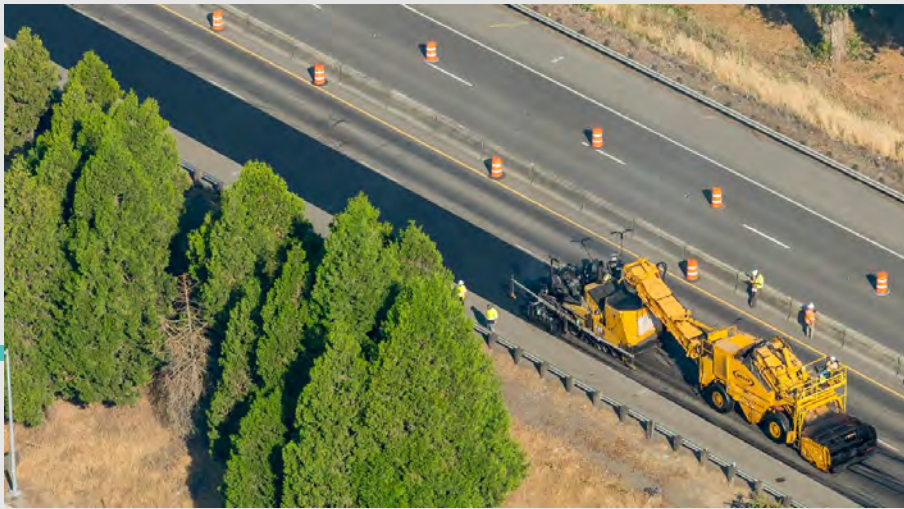




# CONSTRUCTION

## Weekend Crossover Benefits

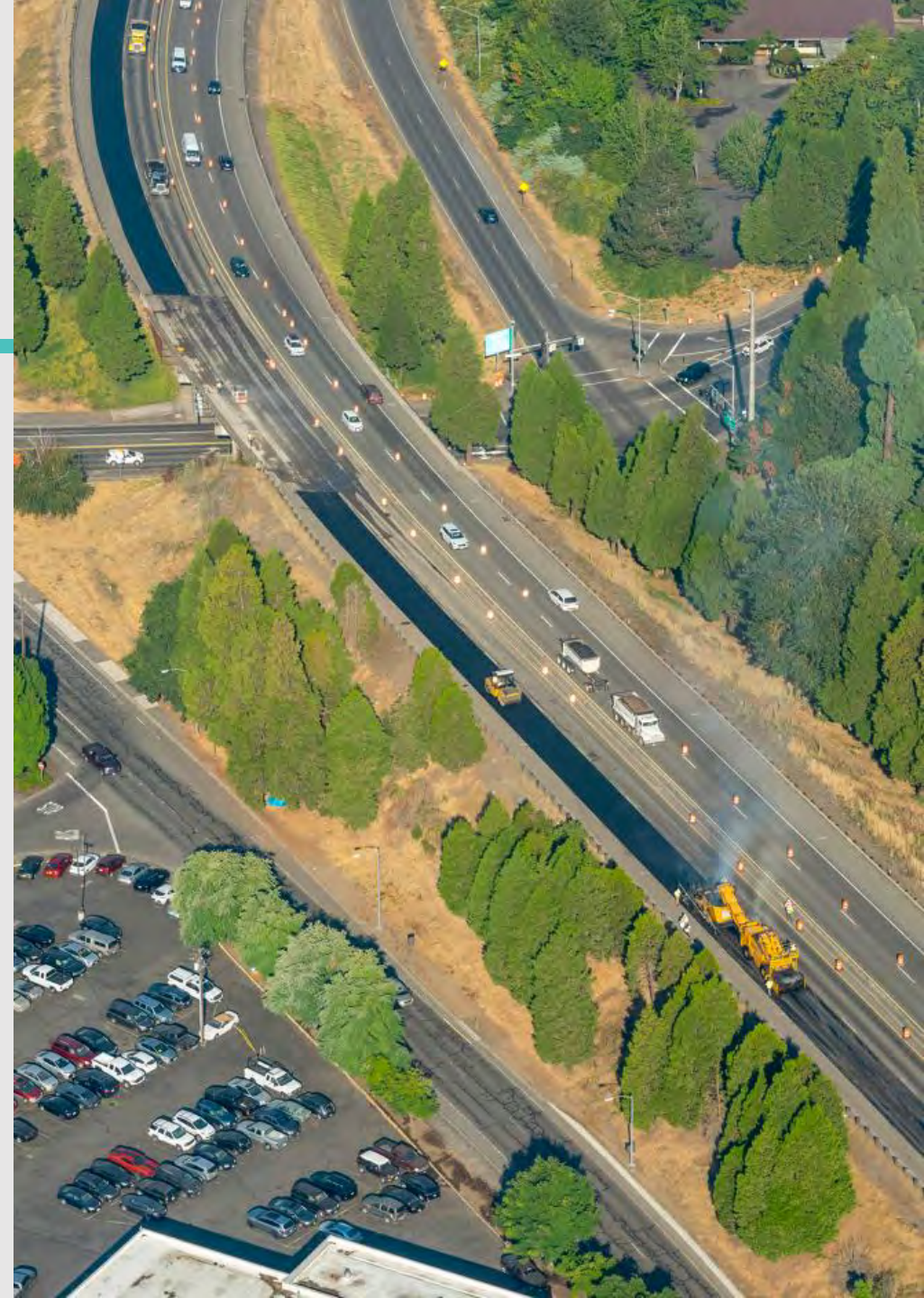
- **PRODUCTION (INCREASED!)**
  - 4,700 – 5,300 Tons during weekend shifts
  - Combined multiple scope of work items
    - ✓ Paving
    - ✓ Bridge work
    - ✓ Striping
- **QUALITY (INCREASED!)**
  - Fewer Joints
  - Smoother ride





# RESULTS

- Traffic moved smoothly through the Project
- No Complaints Received
- No Traffic Related Issues in Work Zone during Crossovers
- Accomplished Paving Goals for Utilizing Weekend Crossovers
- **Planning and open communication critical overall!**





# QUESTIONS?

