

Groundbreaking Celebration



ODOT, alongside community leaders and residents, hosted a groundbreaking on July 22, 2022, to share details of the I-205 Improvements Project and how it will benefit the region and Oregon's economy.

Overall Corridor Benefits

Improving our economy – reliable, safer, earthquake-ready travel on I-205.



Earthquake-Ready Bridges

- The Abernethy Bridge and eight other I-205 bridges will be upgraded or replaced to withstand a major earthquake.



Fewer Crashes

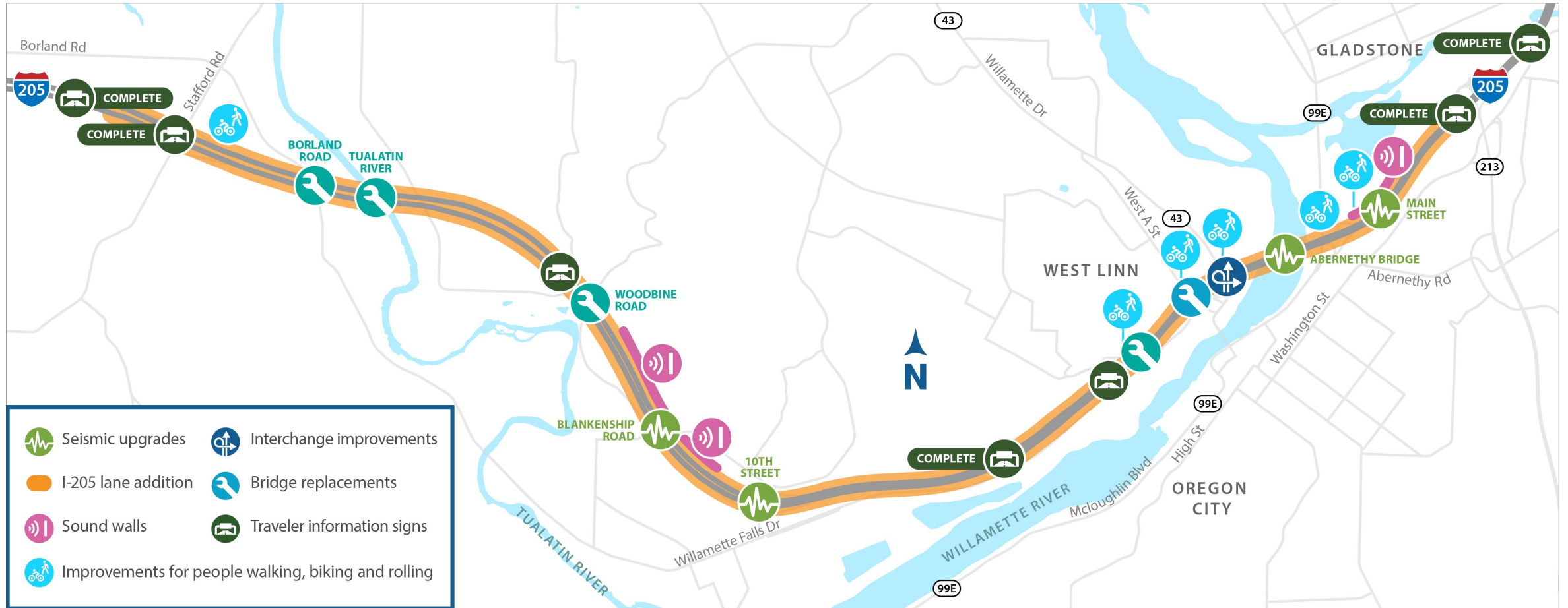
- Improved interchanges and on- and off-ramps will make travel safer, resulting in fewer crashes.



Reduced Congestion and Travel Times

- When completed and combined with tolling, traffic congestion on I-205 will be about two hours per day in 2045, compared to 14 hours per day in 2045 if I-205 isn't upgraded and tolled.

Overall Corridor Improvements



Corridor Improvements

7 MILES
OF IMPROVEMENTS

I-205 IMPROVEMENTS
Stafford Road to OR 213



9 BRIDGES
UPDATED OR REPLACED
TO WITHSTAND
AN EARTHQUAKE



**3 NEW SOUND
WALLS**



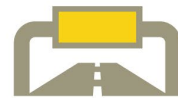
6 LOCATIONS
WITH IMPROVEMENTS
FOR PEOPLE WHO
WALK AND ROLL



**2 IMPROVED
INTERCHANGES**



**7 NEW TRAVELER
INFORMATION
SIGNS**



1 NEW TRAVEL LANE
IN EACH DIRECTION

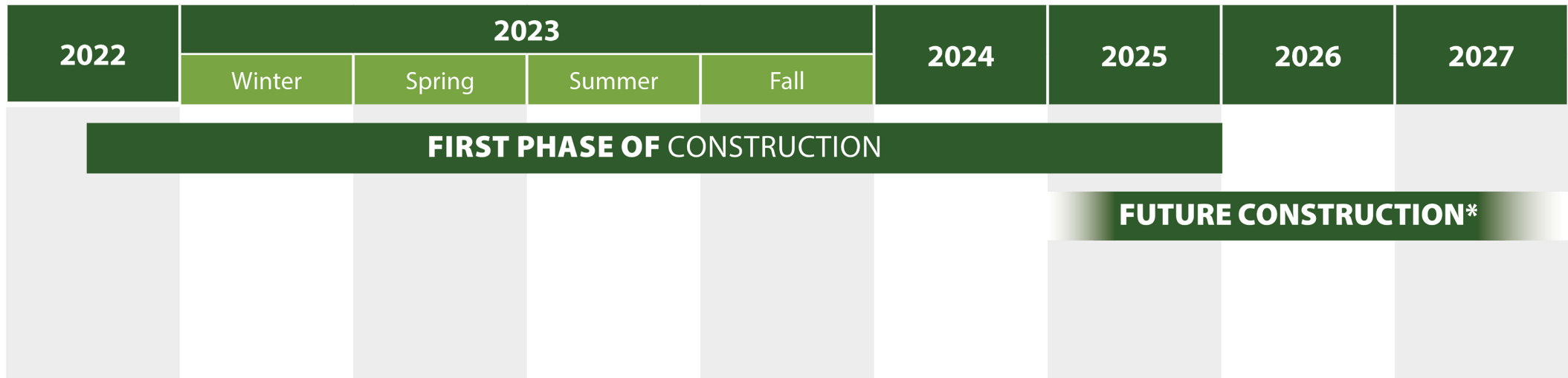


Project Phases

I-205 IMPROVEMENTS Stafford Road to OR 213

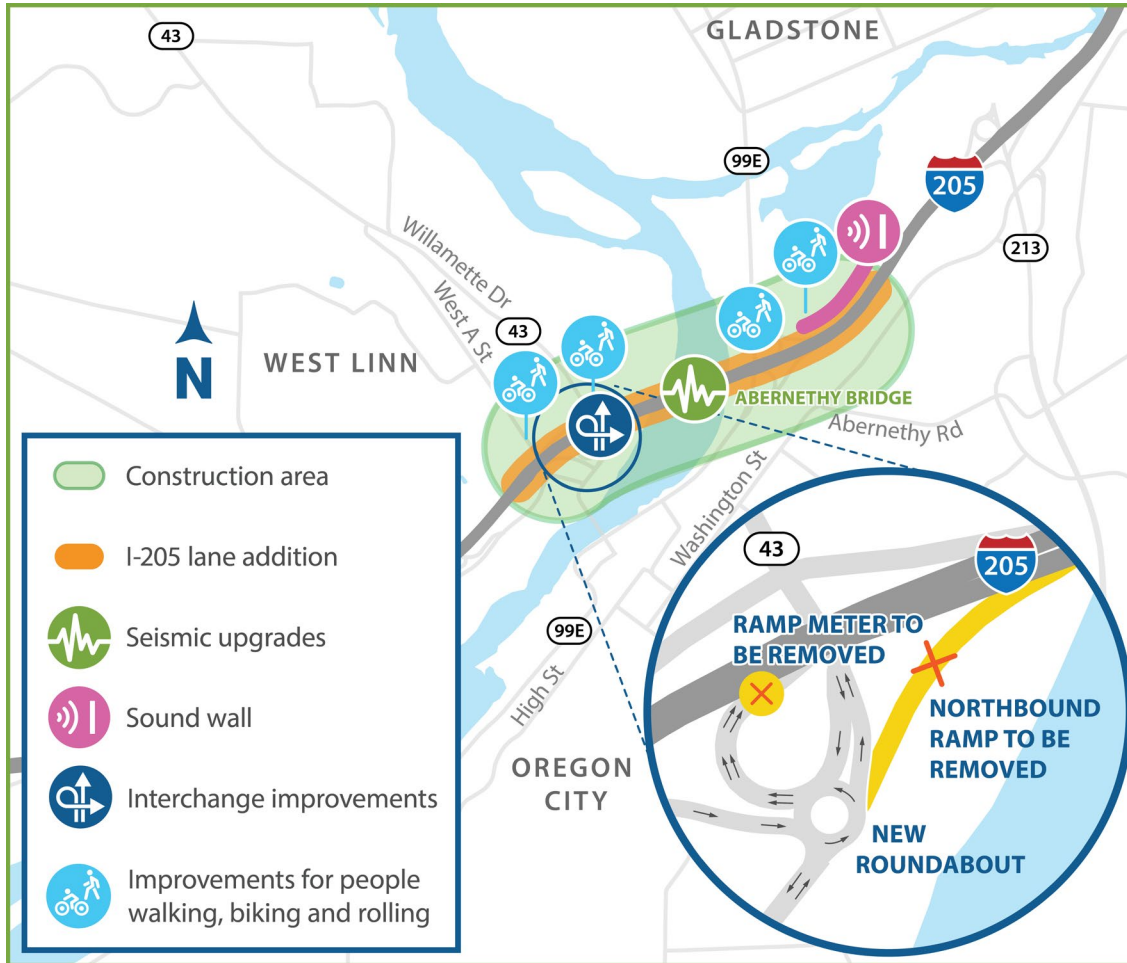


WINTER 2023

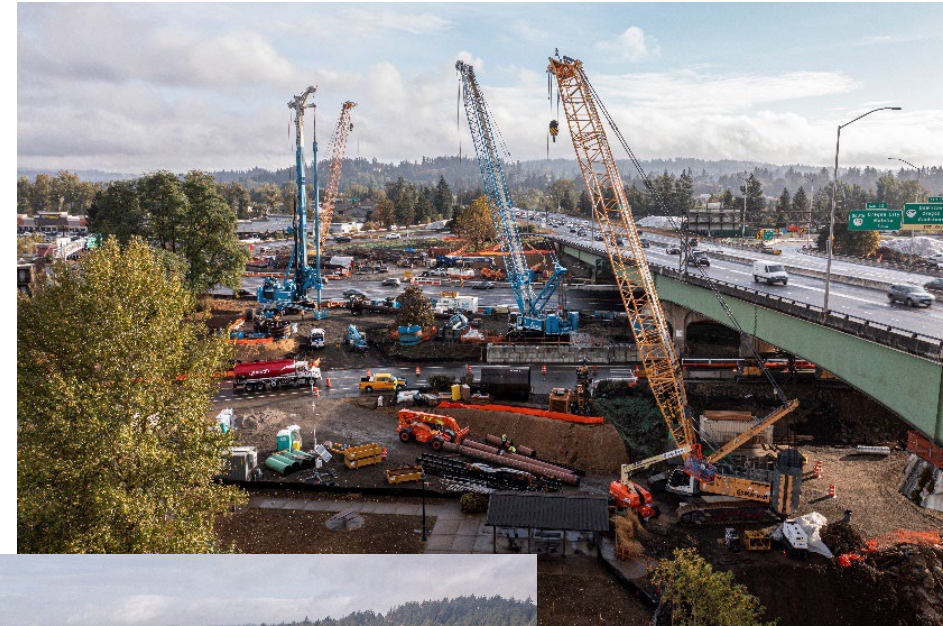


**The schedule for future construction is under evaluation.*

First Phase Improvements



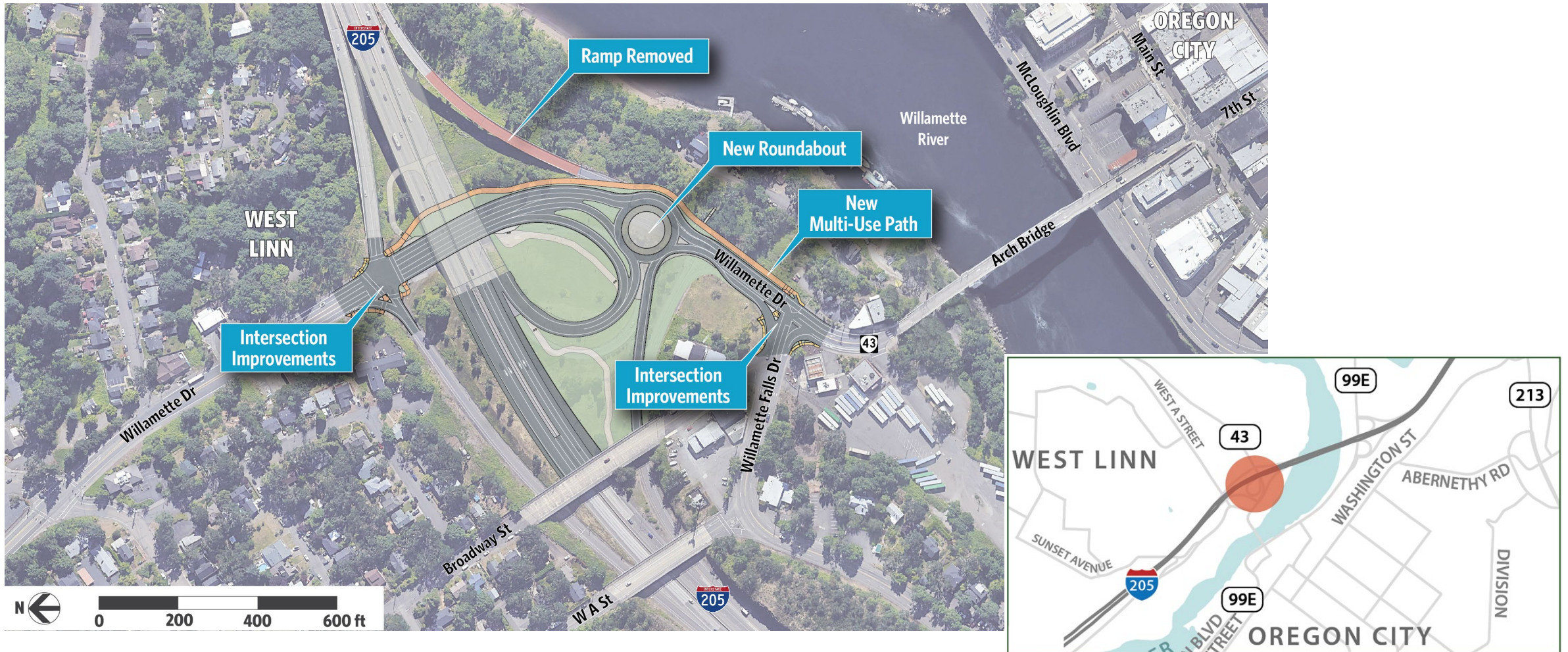
Aerial photo of construction equipment near Jon Storm Park in Oregon City.



Aerial photo of the Abernethy Bridge from Oregon City looking south.

West Linn Interchange Improvements

OR 43 interchange ramp reconfiguration and roundabout construction (2022 - 2023)



West Linn Interchange Improvements

OR 43 interchange ramp reconfiguration and roundabout construction (2022 - 2023)



Oregon City Interchange Improvements

OR 99E SB ramp reconfiguration (2023 - 2024)



Current Activities

Temporary Work Bridges

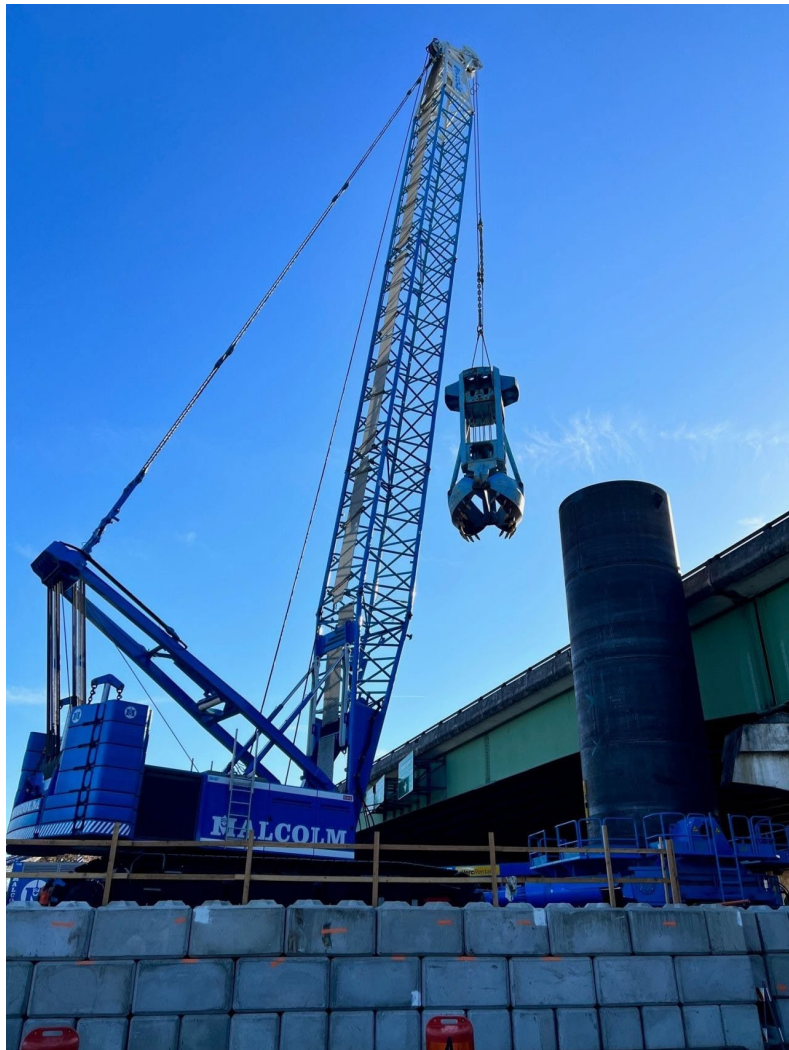


Drilled Shafts

- 12' dia. shafts – 10 total – Approx. 1,790 feet total
 - largest shaft 225'
 - One of the most powerful oscillators in North America.
 - Weight – 221,000 lbs
 - Torque – 22.9 million lb-ft
 - Extraction Force – 2.8 million lbs
- 10' dia. Shafts – 2 total – Approx. 270 feet total
 - largest shaft 130'
- 8' dia. Shafts – 9 total – Approx. 1,040 feet total
 - largest shaft 130'
- 7' dia. Shafts – 1 total – Approx. 282 feet total
 - largest shaft 282'
- 6' dia. Shafts – 6 total – Approx. 230 feet total
 - largest shaft 50'

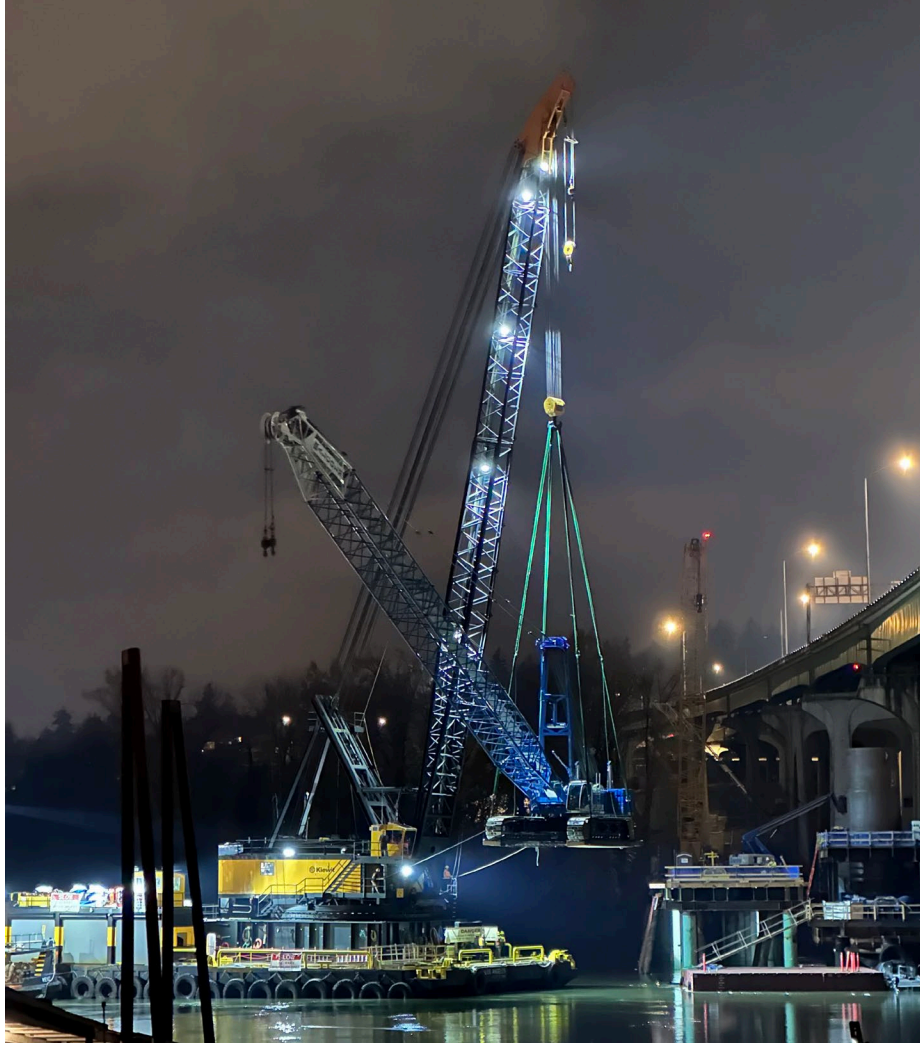
Current Activities

Load Test Shaft (2B) – 45,950 kips



Current Activities

Drilled Shafts

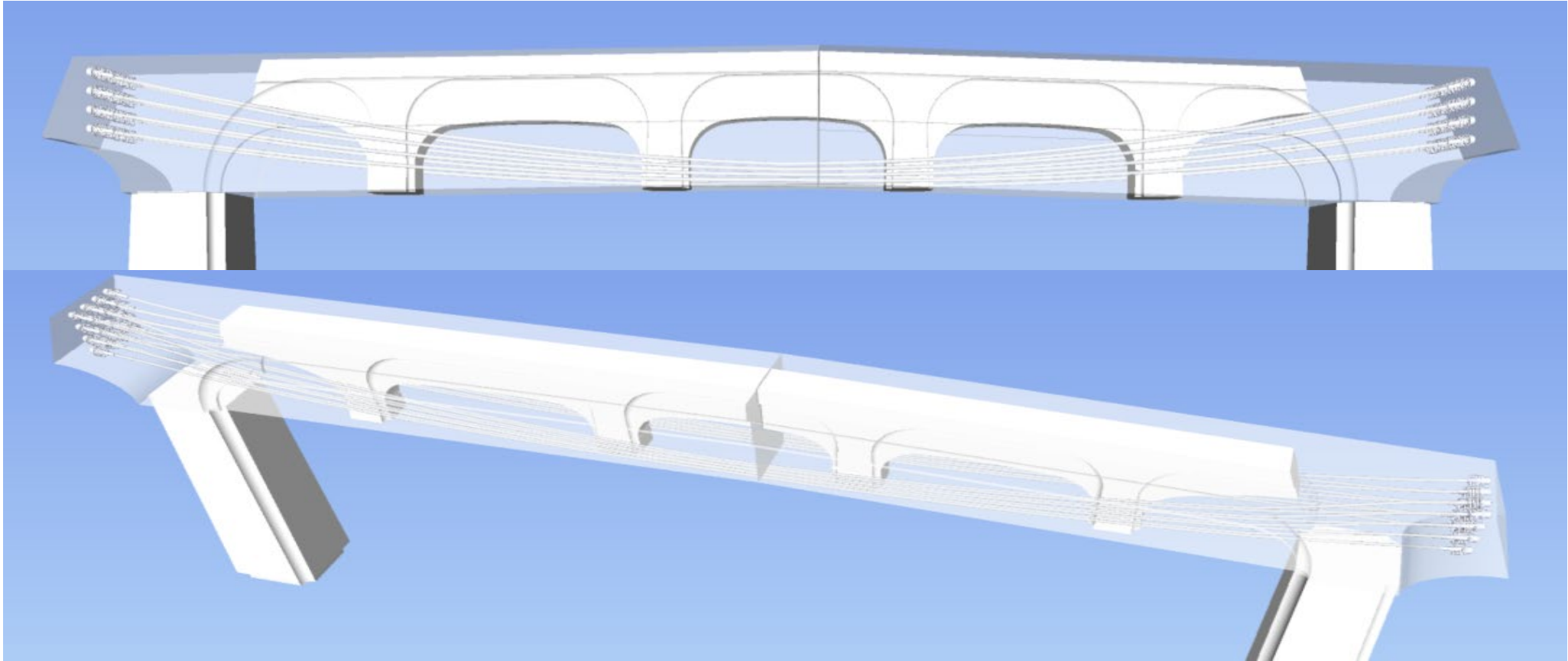


Current Activities

Drilled Shafts



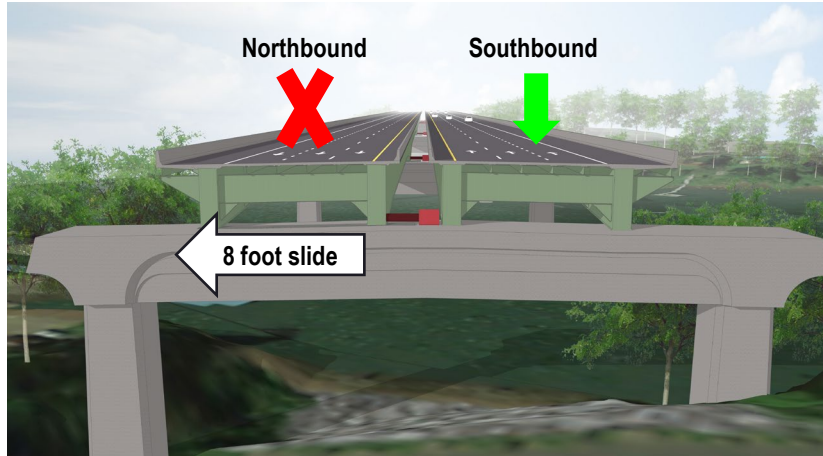
Encapsulating existing cross beams



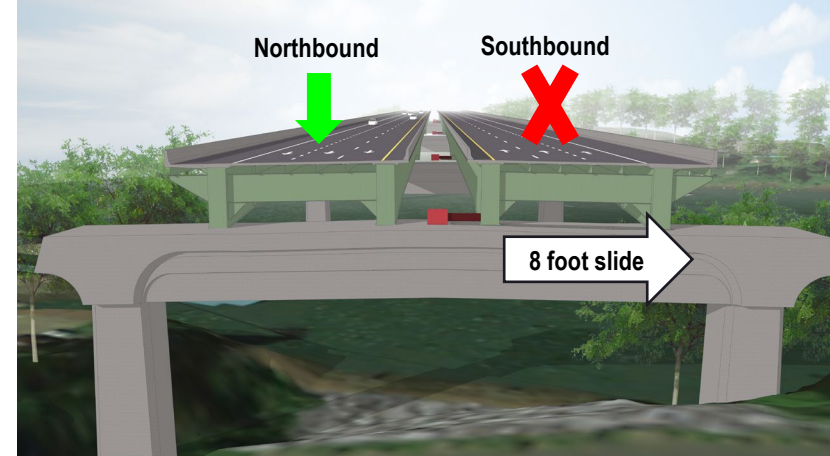
- UP TO 50(EA) 37 STRAND TENDONS AND 100(EA) PT BARS IN A SINGLE CROSSBEAM
- NEARLY 2 MILES OF PT DUCT AND 70 MILES OF STRAND IN A SINGLE CROSSBEAM

Abernethy Bridge Construction Process

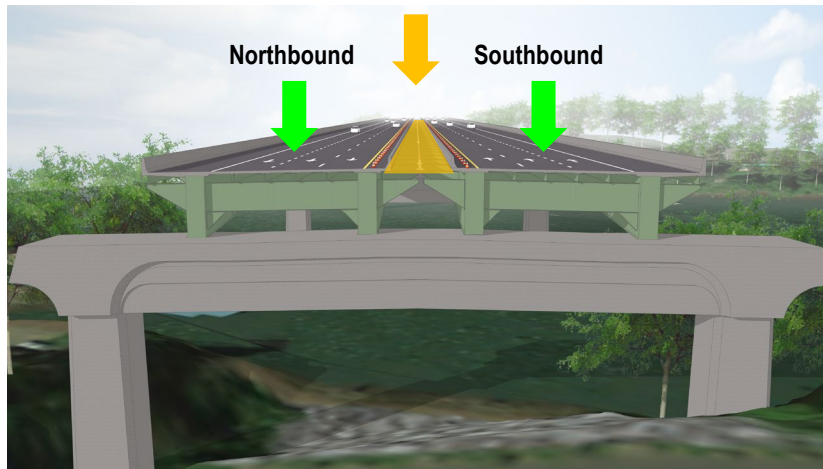
Bridge slide and median widening (2024)



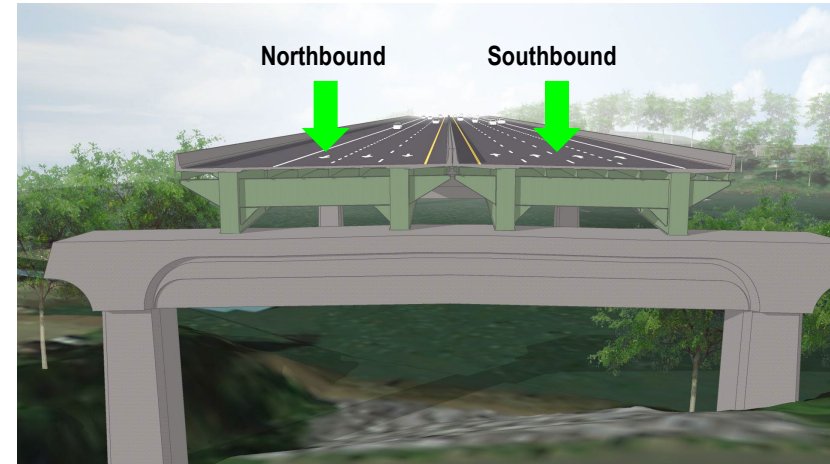
1. Slide northbound lanes 8 feet



2. Slide southbound lanes 8 feet

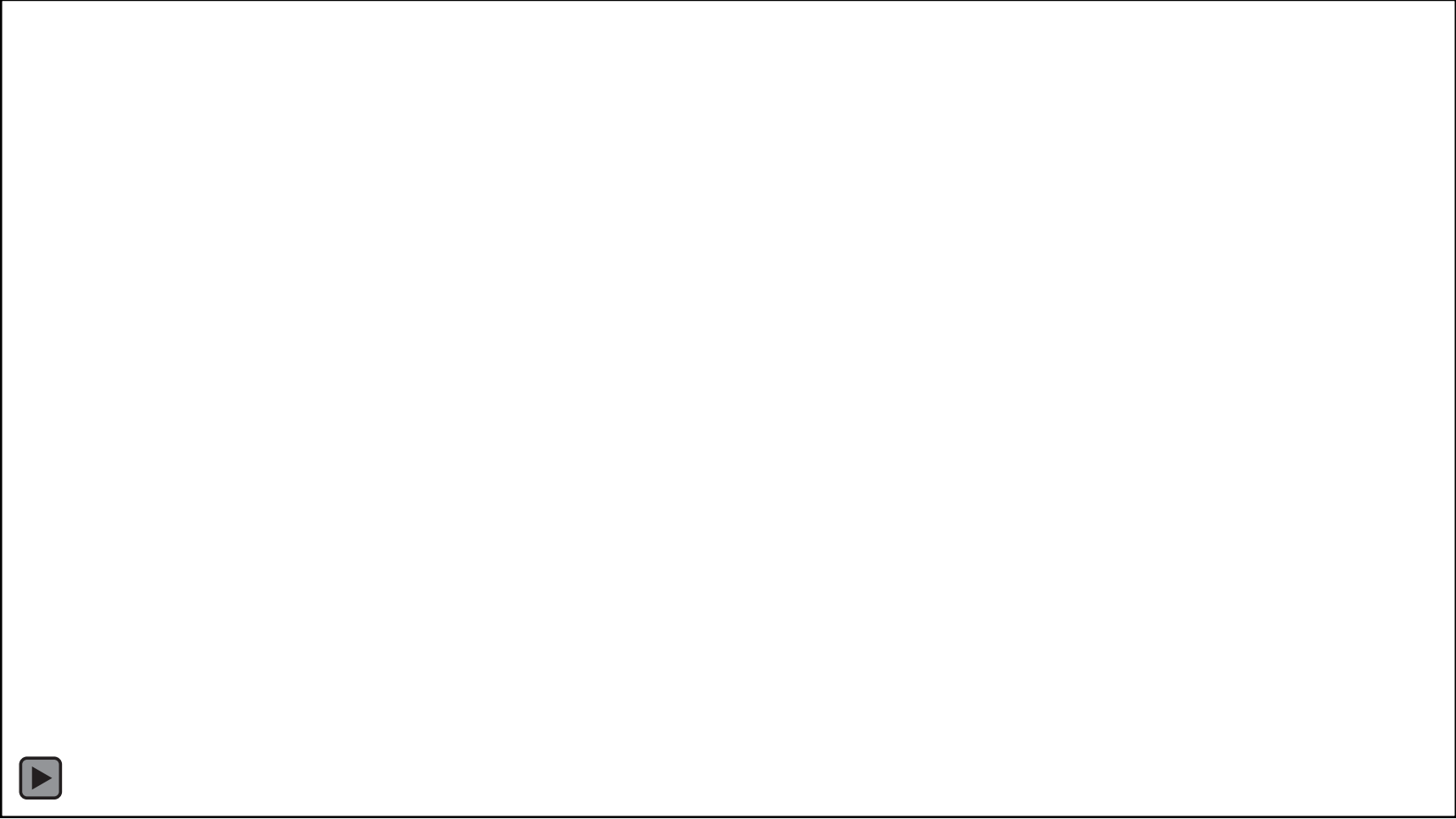


3. Construct the median



4. Final bridge configuration

Abernethy Bridge Slide

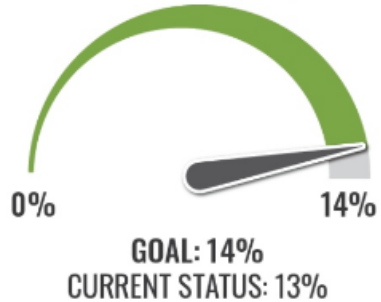


Partnering

- Co-located at jobsite
- Formal partnering sessions quarterly
- Project First
- Diversity and workforce dashboard



CONTRACT DOLLARS
Percent to Disadvantaged Business
Enterprises (DBE)



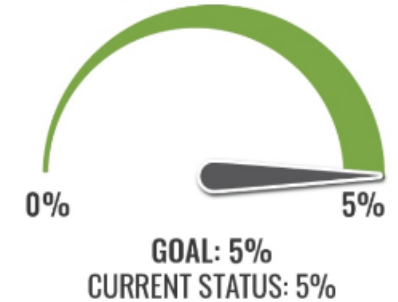
WORKFORCE HOURS
Apprentice Non-Operating
Engineers (Overall)



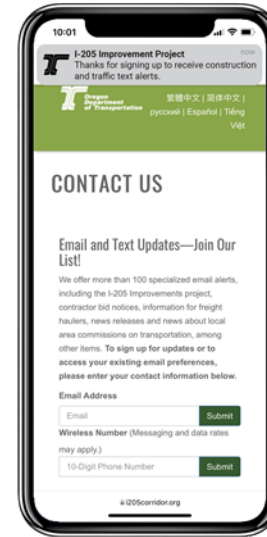
WORKFORCE HOURS
Apprentice Operating Engineers



WORKFORCE HOURS
Tribal Employment Rights Office
(TERO) Referred



Stay Connected!



205improvements@odot.oregon.gov



Project hotline: 503-731-8276



i205Corridor.org



@OregonDOT



Nighttime noise hotline: 503-294-2125



@OregonDOT



Thank you!

Chris Aguon – ODOT Resident Engineer

Todd Makela – Kiewit Project Manager